



**WORLD'S BEST
ALLOY BULLBARS**

East Coast Bullbars (ECB Pty Ltd)

Tel: 07 3897 5700

Fax: 07 3283 1168

ecb@ecb.com.au www.ecb.com.au

29 Snook St
Clontarf QLD 4019
Australia

Po Box 122
Margate QLD 4019
Australia

BN37SY

REPLACES: 26.10.04

REVISED: 28.07.10

FITTING INSTRUCTIONS

GU PATROL 10/04on 3Lt TURBO DIESEL BIG TUBE™ PROTECTION BAR WITH 9000LB WARN WINCH MOUNTING VEHICLE FRONTAL PROTECTION SYSTEM (VFPS) FOR AIR BAG & ADR COMPLIANT VEHICLES

Check installation hardware before commencing.

1. Remove original bumper, including all brackets. Plastic panels are to be removed. Remove three 10mm head bolts each side on inner guard, three PK set screws (each side) at wheel arch return, remove and discard plastic covers and replace top 10mm head bolt. Remove four 10mm head bolts along lower bumper. Remove one 17mm head bolt (each side) at top of chassis rail and two 19mm head bolts (each side) at chassis side. Loosen two 12mm head bolts (each side) on top of chassis bracket to allow bumper to drop below grille for removal.
NOTE: Access to 17mm and 12mm head bolts is through front of bumper.
2. Splice ECB indicator wiring to original indicator wiring. Splice ECB park light wiring to original park light wiring. Use cable locks (supplied). Pass wiring down through inner panels.
NOTE: Original indicator access is on connection at rear bottom of headlight, access park light wiring behind headlight.
3. Attach roller fairlead to winch mounting bracket. Pass 3/8 x 1 ¼ bolts (supplied) from inside use 3/8 nuts, flat and spring washers (supplied) **FINGER TIGHTEN ONLY** in centre of slot holes.
4. Sit winch mounting bracket on crush cans at front of chassis rails. **See figure 1.**
5. Place winch into winch mounting bracket – feeding cable through roller fairlead as installing. Use original 3/8 x 1 ½ winch bolts with flat and spring washers (supplied). **FINGER TIGHTEN ONLY. See figure 2.**
6. Slide winch mounting bracket back along top of chassis to align with holes in chassis. Use M12 x 35 x 1.25 bolts, nuts, flat and spring washers (supplied) for rear holes. **FINGER TIGHTEN ONLY. See figure 3.**
7. Install steel outer mounting brackets to outside of chassis. Use M12 x 35 x 1.25 bolts/washers (supplied) into original captive nuts. **FINGER TIGHTEN ONLY. See figure 4.**
8. Install inner steel mounting brackets (supplied) over front holes on winch mounting bracket. Use M12 x 45 x 1.25 bolts, flat and spring washers (supplied). Join outer and inner steel mounting brackets with 3/8 x 1 ½ bolts, nuts and washers (supplied). **FINGER TIGHTEN ONLY. See figures 5 and 6.**
9. Ensuring that winch mounting bracket is centralised on chassis **TIGHTEN** winch mounting bracket bolts.
NOTE: Steel outer mounting bracket must be able to move up/down for later protection bar alignment.
10. Install control box bracket to winch mounting bracket on drivers' side. Use 3/8 x 1 ¼ bolts, nuts, flat and spring washers (supplied). **FINGER TIGHTEN ONLY. See figure 7.**
11. Attach control box wiring to winch.
12. Attach control box to control box bracket. Use ¼ flat washers (supplied) each side of control box bracket. **TIGHTEN** control box bracket in centre of slot holes. **See figure 8.**



**WORLD'S BEST
ALLOY BULLBARS**

East Coast Bullbars (ECB Pty Ltd)

Tel: 07 3897 5700

Fax: 07 3283 1168

ecb@ecb.com.au www.ecb.com.au

29 Snook St
Clontarf QLD 4019
Australia

Po Box 122
Margate QLD 4019
Australia

13. Move winch as far as possible toward drivers' side. **Tighten in position.**
14. Connect winch wiring and check operation of winch.
15. Attach 6mm clip lock trim (supplied) to centre of protection bar. **See figure 9.** Attach infill trim (supplied) to top sides of ECB protection bar. **NOTE:** Infill trim is to sit over clip lock trim by 25mm., **See figure 10. NOTE:** Trim 30mm off lower edge so trim will sit over end of protection bar. **See figures 11 and 12. Trim excess off end to follow protection bar. See figure 13. NOTE:** Seal any exposed edges of trim with silicone or similar to avoid corrosion of inner steel.
16. Fit ECB LED indicator / park lights into protection bar as per instructions supplied with the LED indicator kit. **NOTE: Ensure park light is to outside. See figure 14.**
17. Attach round trim surrounds (supplied) into the round cut outs on the front of the protection bar. **NOTE:** Wider part of trim faces to bottom side of cut out.
18. Position ECB protection bar to inside of steel mounting brackets. Use ½ x 1 ½ bolts, nuts and washers (supplied). **FINGER TIGHTEN ONLY. Note:** Feed bolts from inside through control box and clutch lever access in protection bar.
19. Align protection bar with vehicle. Level at side returns. Infill trim should just make contact under headlight - side returns. **See figure 15.** Rear of protection bar will position up in front of grille. **See figure 16. See figures 17 and 18** for front and side views.
20. **TIGHTEN ALL** steel mounting bracket bolts and nuts and protection bar bolts and nuts.
21. Adjust alignment of roller fairlead to suit protection bar. **TIGHTEN IN POSITION.** Access bolts through clutch lever cut out in protection bar.
22. Connect indicator/park light wiring into ECB indicators/park lights using cable locks (supplied). **CHECK FOR CORRECT OPERATION.**

ENSURE NUMBER PLATE IS CLEARLY VISABLE

Note: When fitting/refitting the licence plate to the vehicle, ensure there is no obstruction to licence plate vision in accordance with local authorities. If required relocate licence plate to an alternate location.

Further VFPS Notes:

- a) Do not attach VFPS to the vehicle using anchorages not intended for this purpose (e.g. engine mounting bolts).
- b) Do not use this product for any vehicle make or model, other than those specified by the VFPS manufacturer.
- c) Do not remove the plaque or label from the VFPS.
- d) Do not modify the structure of the VFPS in any way.
- e) No accessory or fitment should project forward of the VFPS forward profile.
- f) **ENSURE THESE INSTRUCTIONS ARE LEFT WITH VEHICLE OWNER AND/OR OPERATOR.**

IMPORTANT INFORMATION

Periodically check bolts and nuts for correct tightness, especially if travelling on rough roads



East Coast Bullbars (ECB Pty Ltd)

Tel: 07 3897 5700

Fax: 07 3283 1168

ecb@ecb.com.au www.ecb.com.au

29 Snook St
Clontarf QLD 4019
Australia

Po Box 122
Margate QLD 4019
Australia

WORLD'S BEST
ALLOY BULLBARS

FITTING KIT

1 – Steel winch mount.	4 – 3/8 x 1 1/2 bolts/nuts.
2 – Steel outer mounting brackets.	20 – 3/8 flat washers.
2 – Steel inner mounting brackets.	12 – 3/8 spring washers.
1 – Steel control box bracket.	4 – 1/4 flat washers.
6 – M12 x 35 x 1.25 bolts.	1 – ECB LED Indicator / Park light kit
2 – M12 x 45 x 1.25 bolts.	6 – Cable locks.
6 – 1/2 x 1 1/2 bolts/nuts.	2 – 725mm lengths black infill trim.
20 – 1/2 flat washers.	1 – 1100mm length 6mm black clip lock trim
14 – 1/2 spring washers.	2 – Round cut out trims.
4 – 3/8 x 1 1/4 bolts/nuts.	



Figure 1



Figure 2



Figure 3

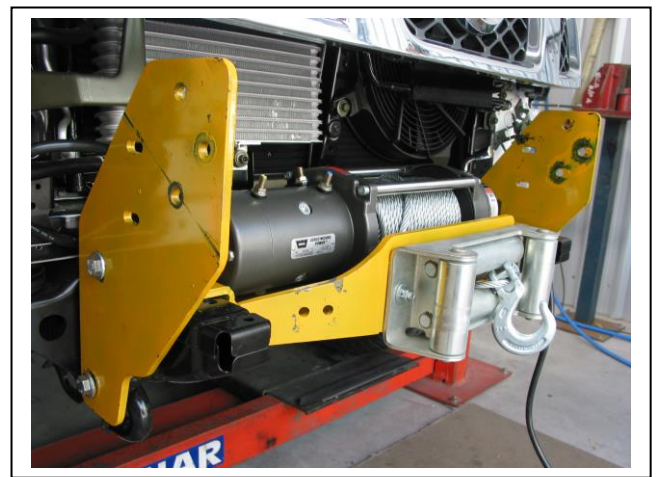


Figure 4



East Coast Bullbars (ECB Pty Ltd)

Tel: 07 3897 5700

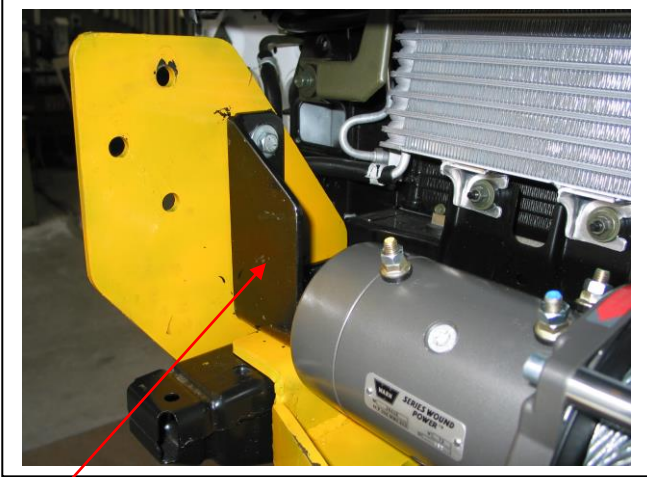
Fax: 07 3283 1168

ecb@ecb.com.au www.ecb.com.au

29 Snook St
Clontarf QLD 4019
Australia

Po Box 122
Margate QLD 4019
Australia

WORLD'S BEST
ALLOY BULLBARS



Inner steel mount **Figure 5** – Drivers side shown

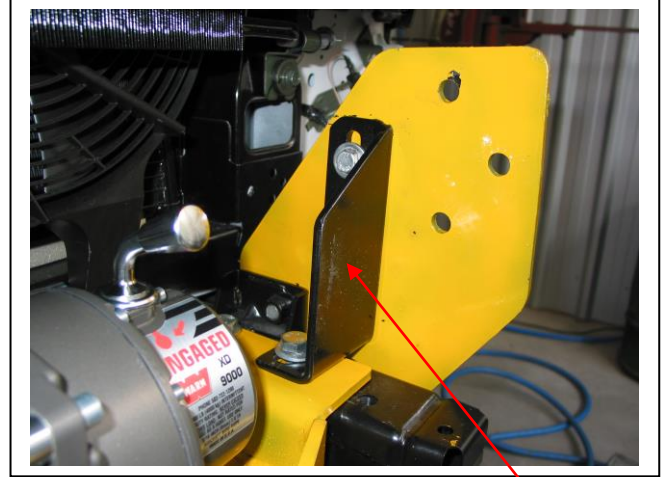
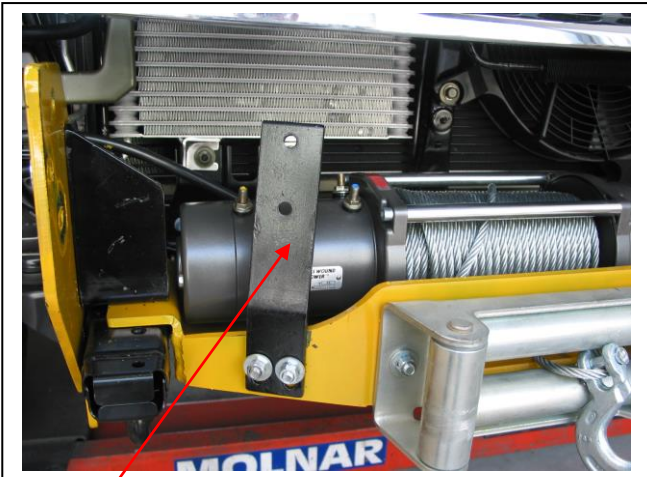


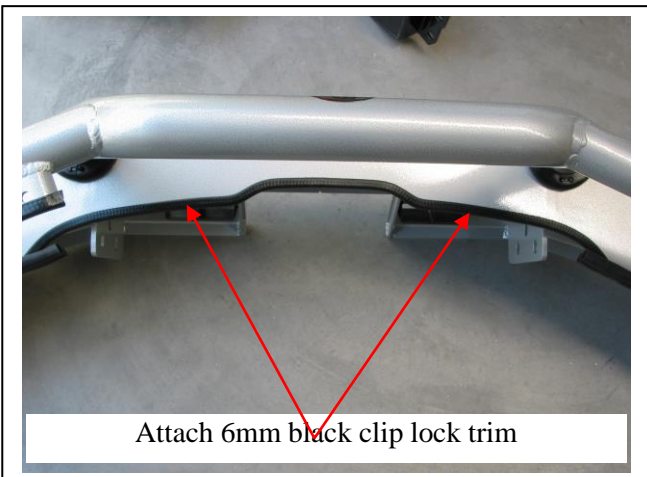
Figure 6 - Passenger side shown Inner steel mount



Control box bracket **Figure 7**

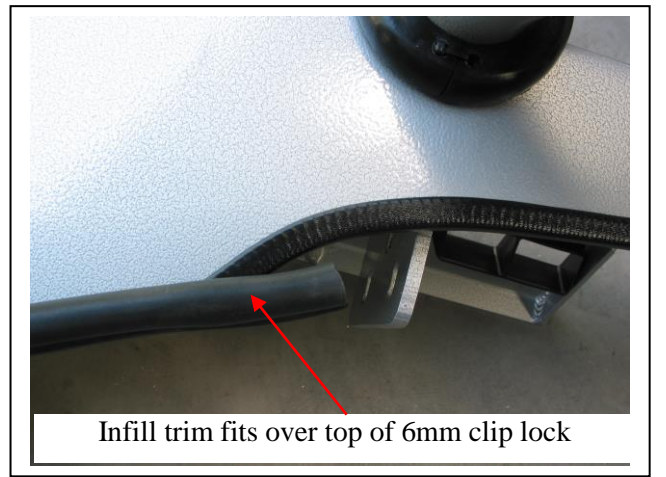


Figure 8



Attach 6mm black clip lock trim

Figure 9



Infill trim fits over top of 6mm clip lock

Figure 10



East Coast Bullbars (ECB Pty Ltd)

Tel: 07 3897 5700

Fax: 07 3283 1168

ecb@ecb.com.au www.ecb.com.au

29 Snook St
Clontarf QLD 4019
Australia

Po Box 122
Margate QLD 4019
Australia

WORLD'S BEST
ALLOY BULLBARS

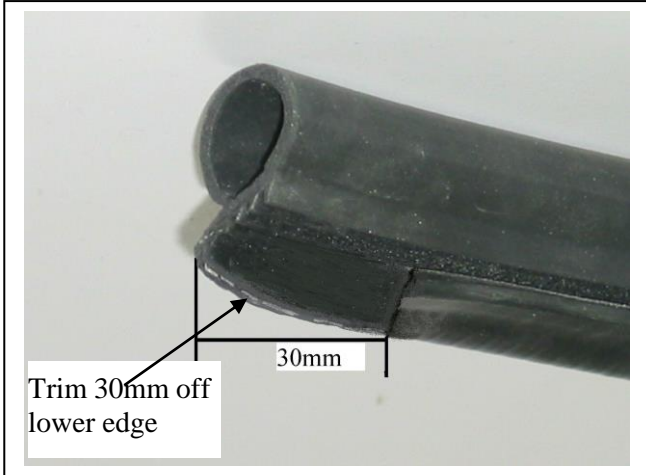
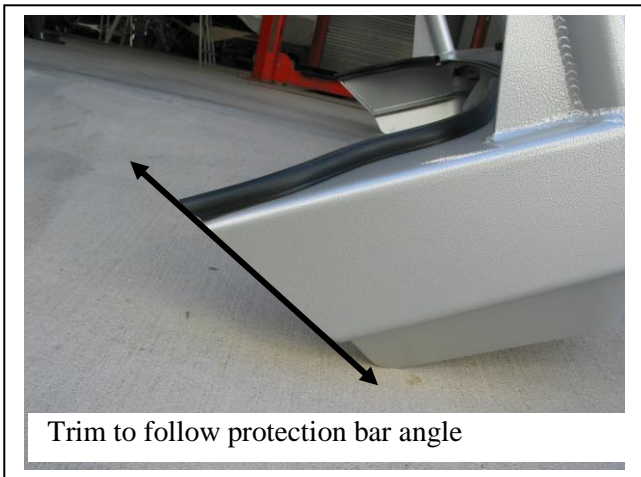


Figure 11



Attach black
infill trim

Figure 12



Trim to follow protection bar angle

Figure 13

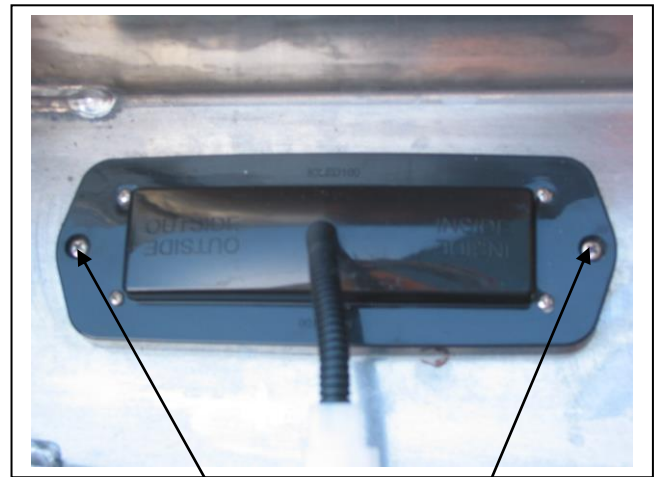


Figure 14
Stainless steel self-tappers

Note: Example only angle on bar maybe different to the above



Infill trim should
just make
contact

Figure 15



Figure 16



**WORLD'S BEST
ALLOY BULLBARS**

East Coast Bullbars (ECB Pty Ltd)

Tel: 07 3897 5700

Fax: 07 3283 1168

ecb@ecb.com.au www.ecb.com.au

29 Snook St
Clontarf QLD 4019
Australia

Po Box 122
Margate QLD 4019
Australia



Figure 17



Figure 18
ECB Fog Light Model shown



**WORLD'S BEST
ALLOY BULLBARS**

East Coast Bullbars (ECB Pty Ltd)

Tel: 07 3897 5700

Fax: 07 3283 1168

ecb@ecb.com.au www.ecb.com.au

29 Snook St
Clontarf QLD 4019
Australia

Po Box 122
Margate QLD 4019
Australia

We value your comments

Dear Fitter,

ECB would like to know how you went with the installation of this product. We value your comment and may need to contact you to clarify some details so please complete your contact details clearly.

We would appreciate if you could complete as many of the following details as possible.

Your Name:	Your contact No.
Product Part No.	Product Invoice No.
Product Description:	Make, model, and year of vehicle:
Product Work Order No.	Company your from/Company product purchased from:

Date of fitment: ___/___/___

Was the fitting hardware supplied complete?

Yes

No

If no what was not supplied

Did the installation go well?

Yes

No

Please provide comments

Please draw diagrams if you need to.

Post to
Reply Paid 66
PO Box 122
Margate QLD 4019

Fax to
(07) 3283 1168



**WORLD'S BEST
ALLOY BULLBARS**

East Coast Bullbars (ECB Pty Ltd)

Tel: 07 3897 5700

Fax: 07 3283 1168

ecb@ecb.com.au www.ecb.com.au

29 Snook St
Clontarf QLD 4019
Australia

Po Box 122
Margate QLD 4019
Australia



East Coast Bullbars (ECB Pty Ltd)

Tel: 07 3897 5700

Fax: 07 3283 1168

ecb@ecb.com.au www.ecb.com.au

29 Snook St
Clontarf QLD 4019
Australia

Po Box 122
Margate QLD 4019
Australia

WORLD'S BEST
ALLOY BULLBARS

DESPATCH CHECKLIST BN37SY

ICZBKCN37



Work Order #		See other side of this page for photos of all mounts
Finish:		
Transport:		
Due Date:		

- 1 – Steel winch mount.
- 2 – Steel outer mounting brackets.
- 2 – Steel inner mounting brackets.
- 1 – Steel control box bracket.
- 1 – Bolt Kit.
- 1 – LED ECB indicator / park light kit.
- 2 – 725mm lengths black **infill** trim.
- 1 – 1100mm length 6mm clip lock.
- 2 – Round cut out trims.
- 2 – ECB overrides – **Fitted to bar.**
- 2 – 6mm air scoops – **Fitted to bar.**



Is this product “the best it can be” Yes _____ / _____
Wrapper’s initials / Checker initials

If **NO** fix before continuing

All parts checked and completed by:

Nut and bolts: _____ Date __/__/__

Order control: _____ Date __/__/__

Final wrap check: _____ Date __/__/__



East Coast Bullbars (ECB Pty Ltd)

Tel: 07 3897 5700

Fax: 07 3283 1168

ecb@ecb.com.au www.ecb.com.au

29 Snook St
Clontarf QLD 4019
Australia

Po Box 122
Margate QLD 4019
Australia

WORLD'S BEST
ALLOY BULLBARS

